



CRISTALINA
PRIVADA RESIDENCIAL

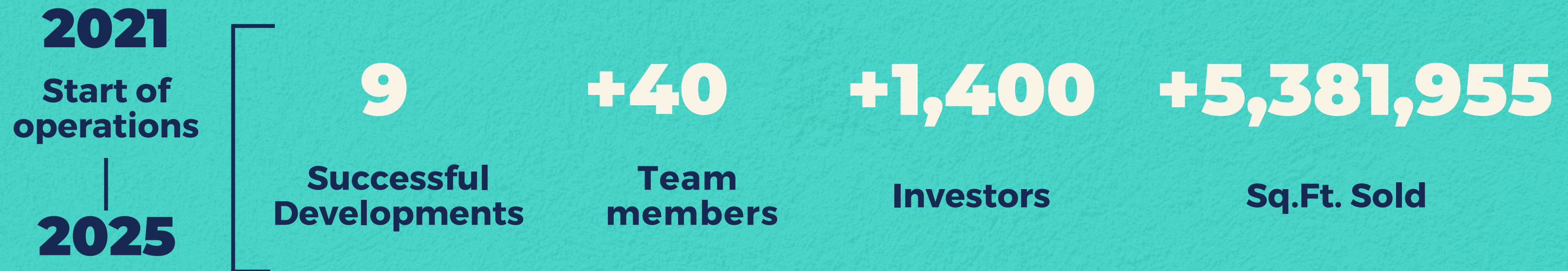
CRISTALINA

PRIVADA RESIDENCIAL

OUR COMPANY

EVERLAND REAL ESTATE DEVELOPMENT

WE ARE YOUR REAL ESTATE PARTNER



NATIONWIDE PRESENCE

- **Nuevo Leon**
 - **Tamaulipas**
 - **Jalisco**
 - **CDMX**
 - **Edo. de Mexico**
 - **Yucatan**
 - **Quintana Roo**
-



COMPANY VALUES

WHO WE ARE



EVERLAND
Real Estate Development



TRANSPARENCY



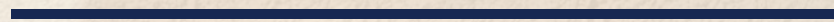
CLOSENESS



SYNERGY



GROWTH



YUCATAN

One of the benchmarks for real estate growth in Mexico. The air connectivity that links different points of the country and its highway network have caught the attention of investors of all kinds. However, none of this would be possible without two essential factors: **safety and quality of life.**

The safest estate for conducting operations and investments.

American Chamber of Commerce of Mexico

Merida ranks as the #1 tourist destination to visit in 2024.

Travel Lemming

Merida: The safest city in America.

CEOWORLD Magazine 2022 / Readers' Choice Awards 2022 / Revista Condé Nast Traveler 2022



YUCATAN

INVESTMENT AND GROWTH



Tourism



Services



Infraestructure

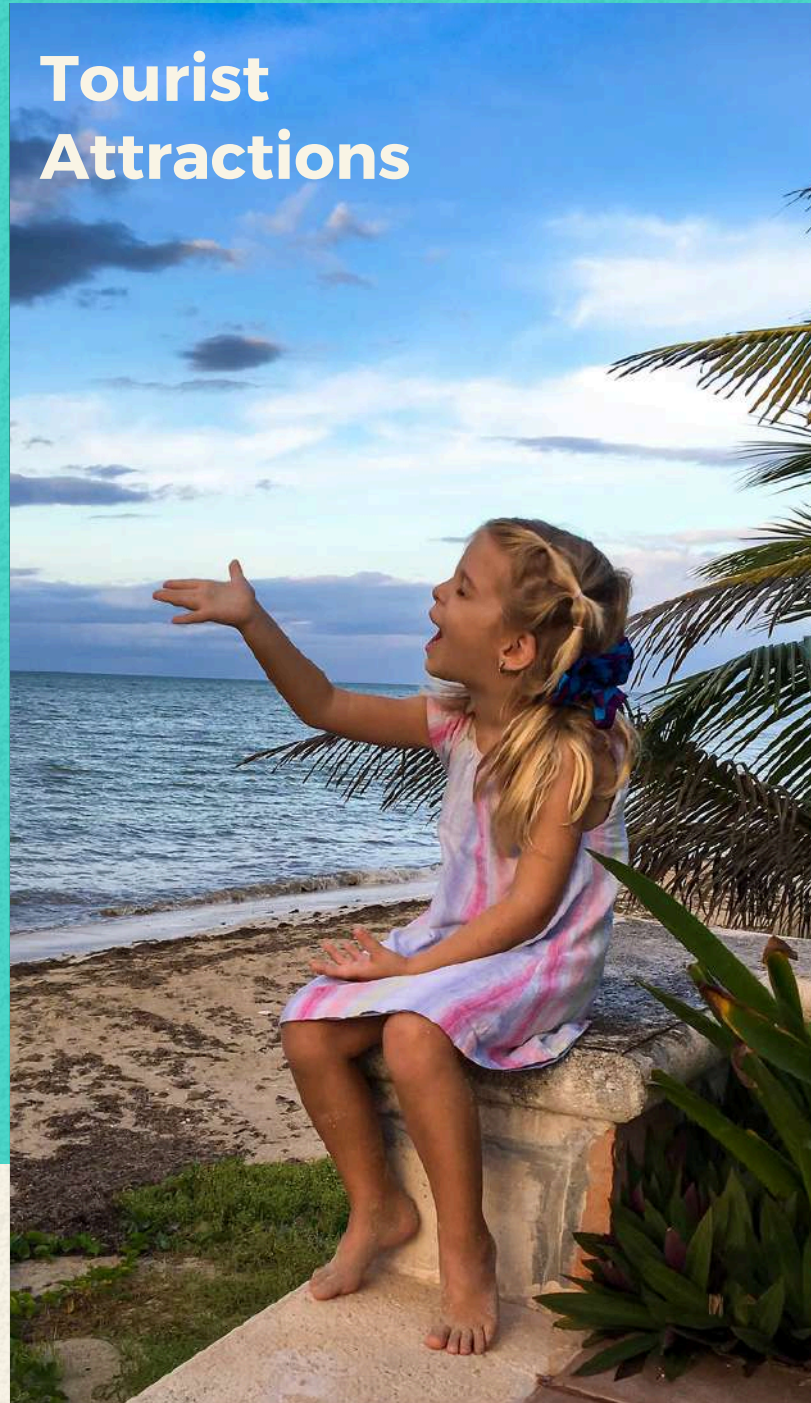
YUCATAN

LIFESTYLE



Gastronomy

**Tourist
Attractions**



Culture

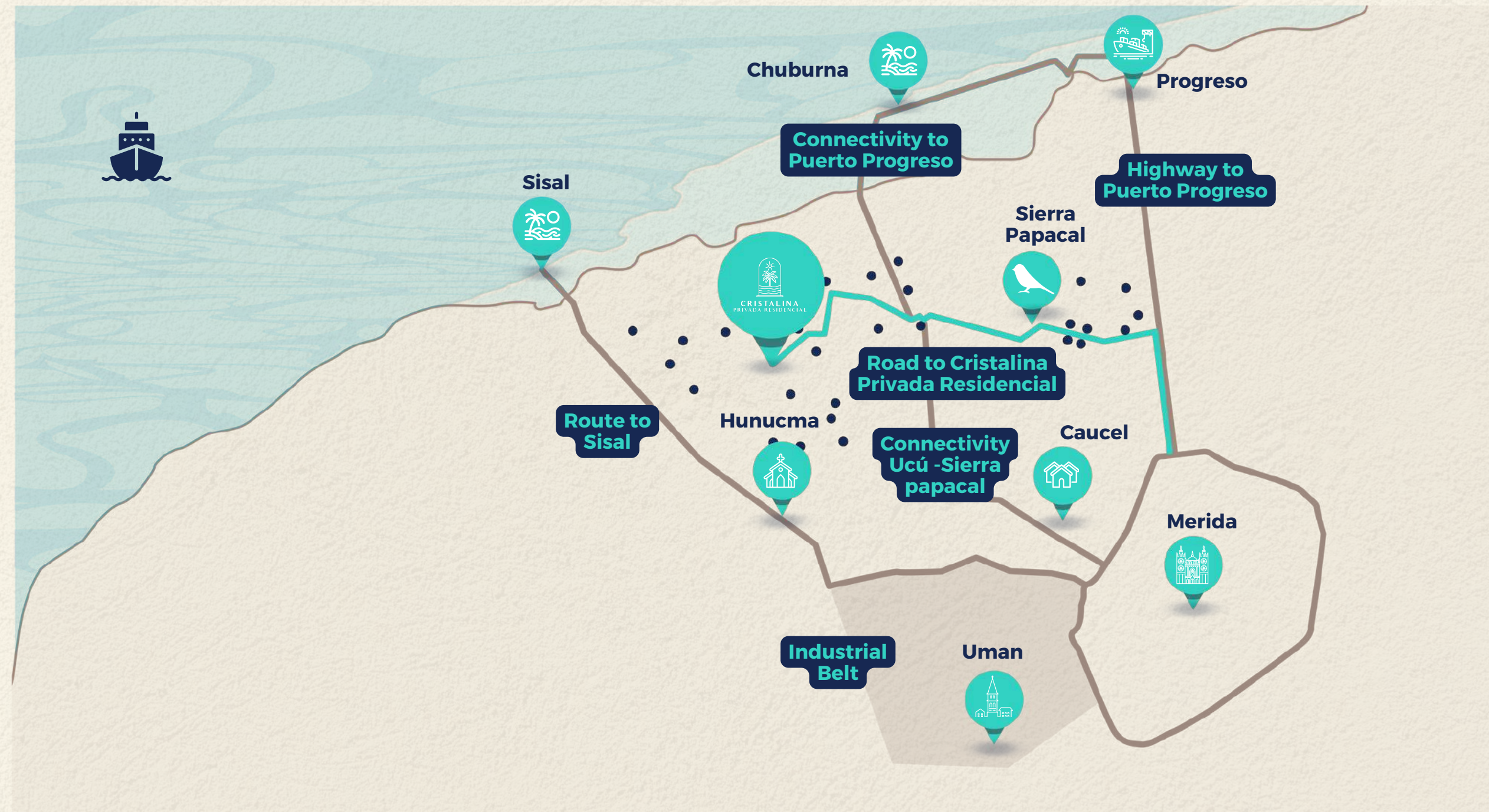
MAP

DISTANCES



CRISTALINA
PRIVADA RESIDENCIAL

● Real Estate Developments



MAP

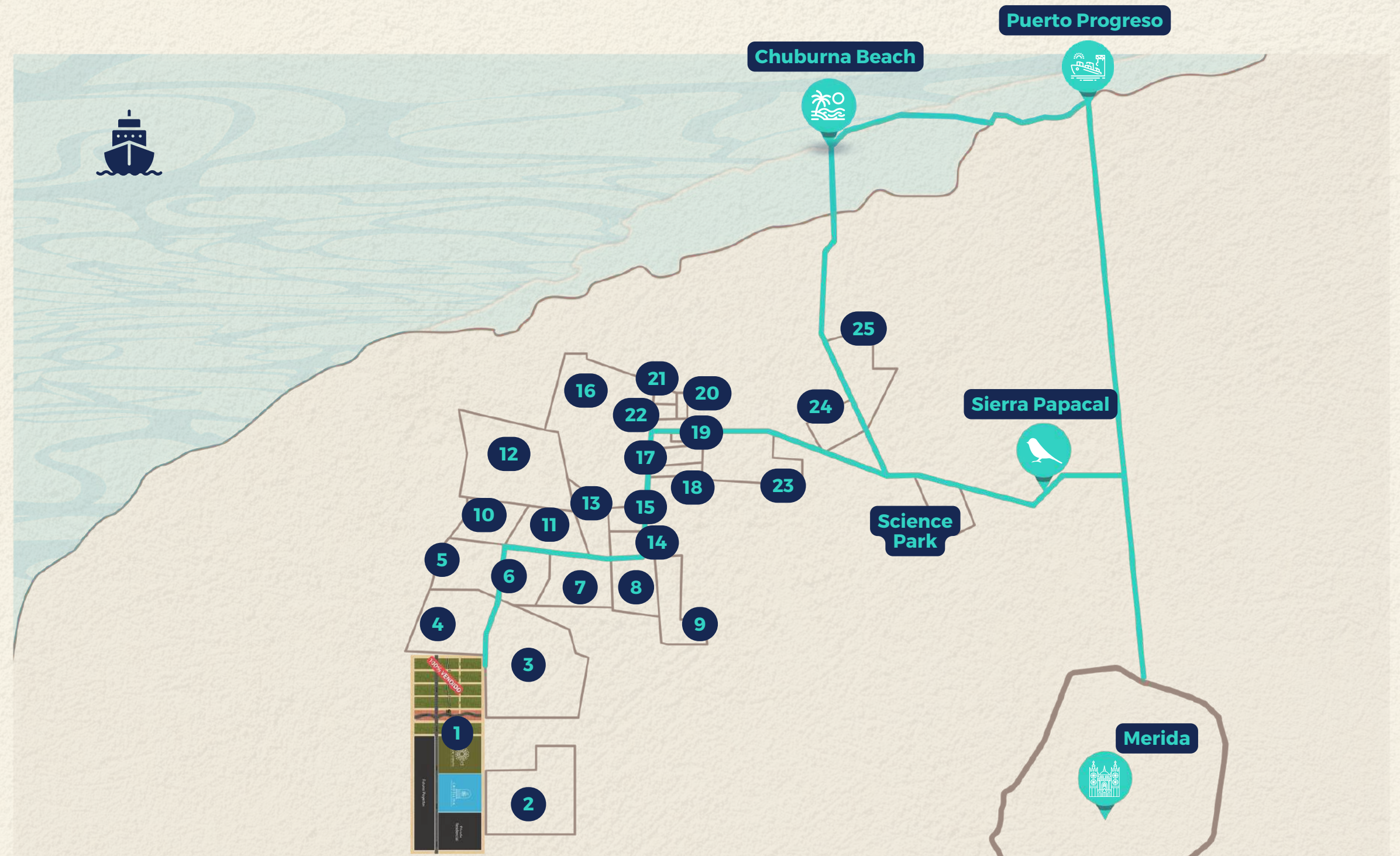
REAL ESTATE DEVELOPMENTS



D@SHA

Inversión natural

- | | |
|----------------|-----------------------|
| 1 Dosha | 14 Amanthe |
| 2 Mukaba | 15 Ikal |
| 3 Menara | 16 Country Lakes |
| 4 Valhalla | 17 Monte Verde |
| 5 Minaret | 18 Palmares |
| 6 Adhara | 19 Bosques de Hunucma |
| 7 Quadra | 20 Altana |
| 8 Cuatro Lagos | 21 Altana 2 |
| 9 Sendero | 22 Alamedas |
| 10 Izana | 23 Green Park |
| 11 Monte Blanc | 24 Punta Cometas |
| 12 Silvestre | 25 Ciudad Maderas |
| 13 Zágora | |



DOSHA

INVERSION NATURAL

DOSHA

Inversión natural



Illustrative Image

It is a development located in one of the fastest-growing areas in Yucatan; we offer investors a project surrounded by nature, areas for recreation, meditation, pet-friendly spaces, or simply long walks.

Dosha Inversion Natural is the ideal product for those seeking a project with a promising future.



Illustrative Image

MASTERPLAN

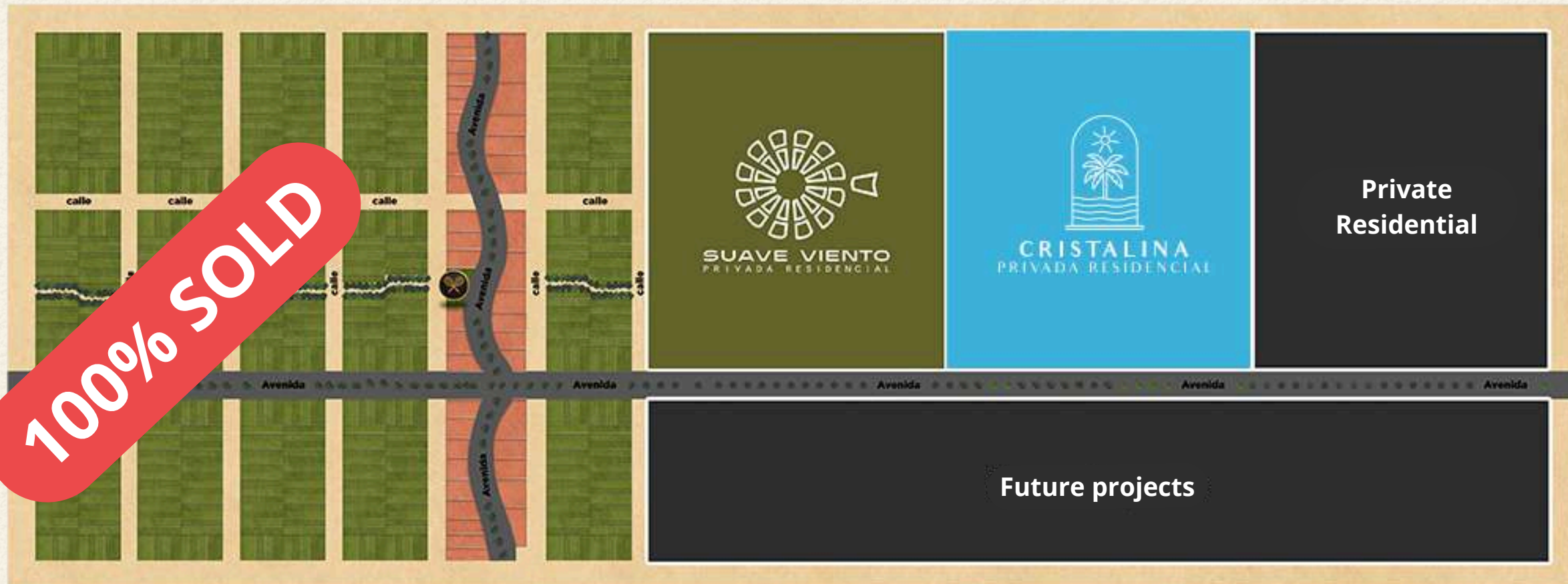
D@SHA

Inversión natural

PHASE 1

PHASE 2

2025



CRISTALINA

PRIVADA RESIDENCIAL



CRISTALINA
PRIVADA RESIDENCIAL



Illustrative Image

Cristalina Privada Residencial is located in the northwest of Yucatan and forms an integral part of the **Dosha Inversion Natural** project.

Cristalina is only 15 miles from the Yucatan coast and features an organic architectural design, characterized by its green spaces, urbanization services, and over 15 amenities.

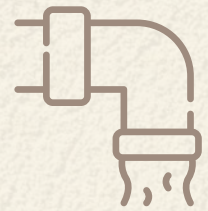
HIGH VALUE APPRECIATION

- **Condominium regime.**
- **235 residential lots ranging from 2,690 to 6,458 sq ft.**



- **Organic development with over 215,278 sq ft of parks and interconnected tree-lined trails.**
- **More than 15 first-class amenities.**
- **Controlled and safe environment for residents.**

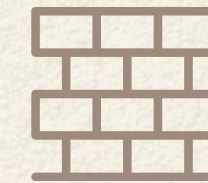
URBAN SERVICES



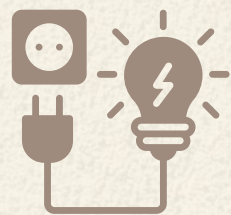
**Pluvial and
sanitary drainage**



**Service
connection wall**



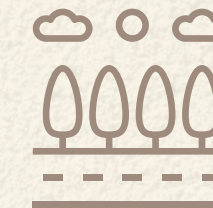
Perimeter wall



Electrical network



Water supply



**Roads with
vegetation and
sidewalks**



Public lighting



**Paved streets and
avenues**

TYPES OF LOTS



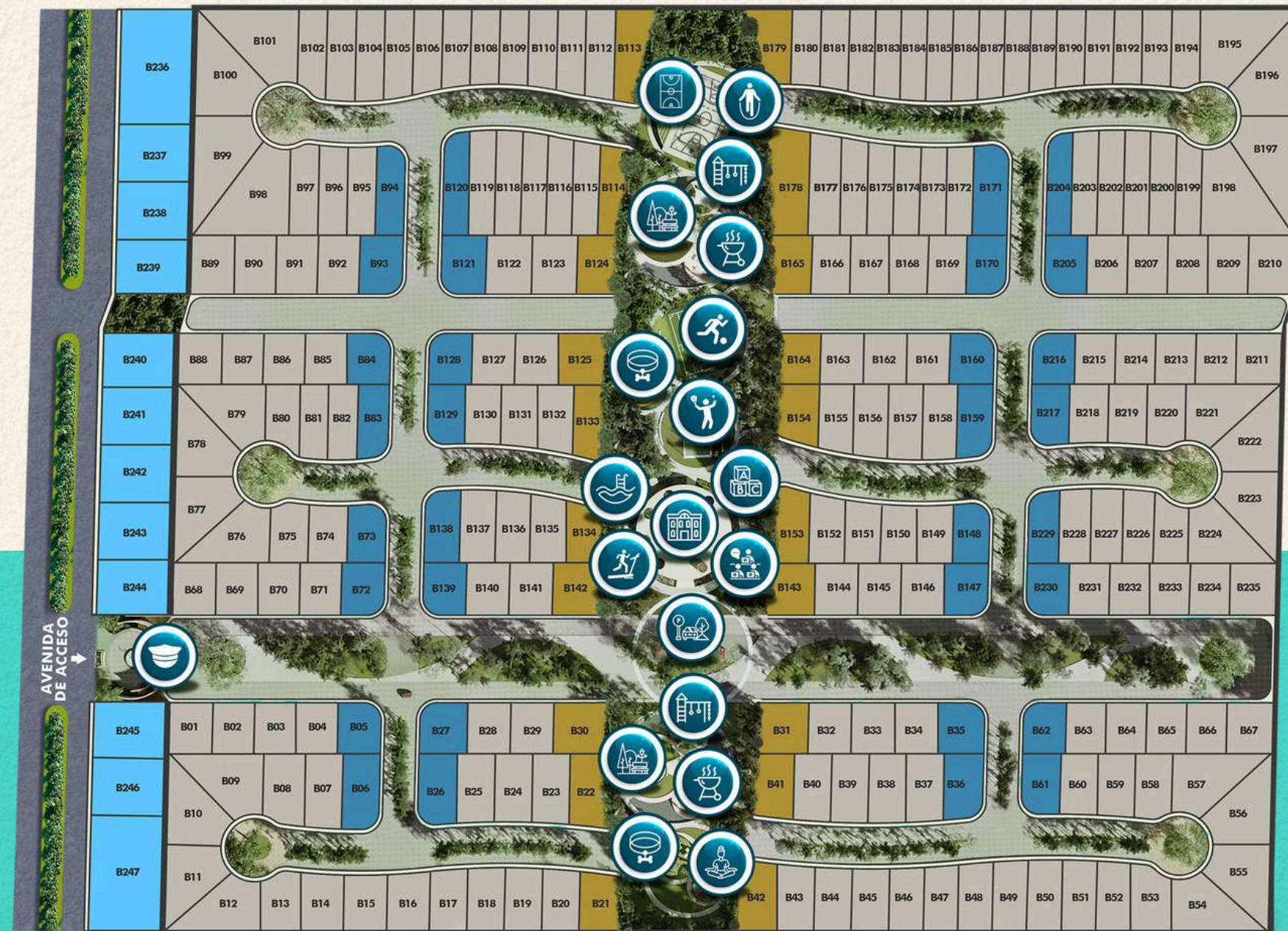
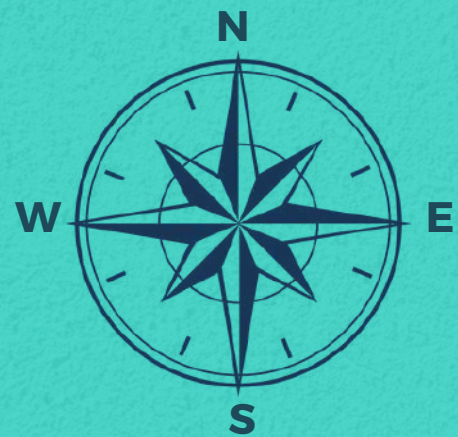
CRISTALINA
PRIVADA RESIDENCIAL

CLUBHOUSE LOT

CORNER LOT

PREMIUM LOT

AVENUE LOT



AMENITIES

CRISTALINA PRIVADA RESIDENCIAL



Children's playground



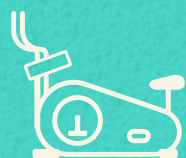
Pet Park



Padel court



Outdoor gym



Indoor gym



Pool



Playroom



Clubhouse



Recreational area



Grill Zones



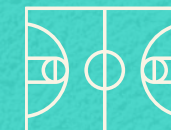
Yoga area



Soccer court



**Co-working space
with Wi-Fi**



Multi-purpose court

VIRTUAL TOUR



CRISTALINA
PRIVADA RESIDENCIAL



Learn more about **Cristalina** and
experience it through **virtual reality**.



Access

Illustrative Image



CRISTALINA
PRIVADA RESIDENCIAL



Children's parks and terraces

Illustrative Image

THE MEXICAN SOUTHEAST AWAITS YOU



START OF CONSTRUCTION
2025



DELIVERY OF INFRAESTRUCTURE
2029



FINANCING

YOU HAVE CONTROL OF YOUR INVESTMENT

BENEFITS

- Financing plan up to 10 years.
- No credit check.
- 12% Down payment.
- Privately owned land.
- Discounts for early payment.





EVERLAND
Real Estate Development